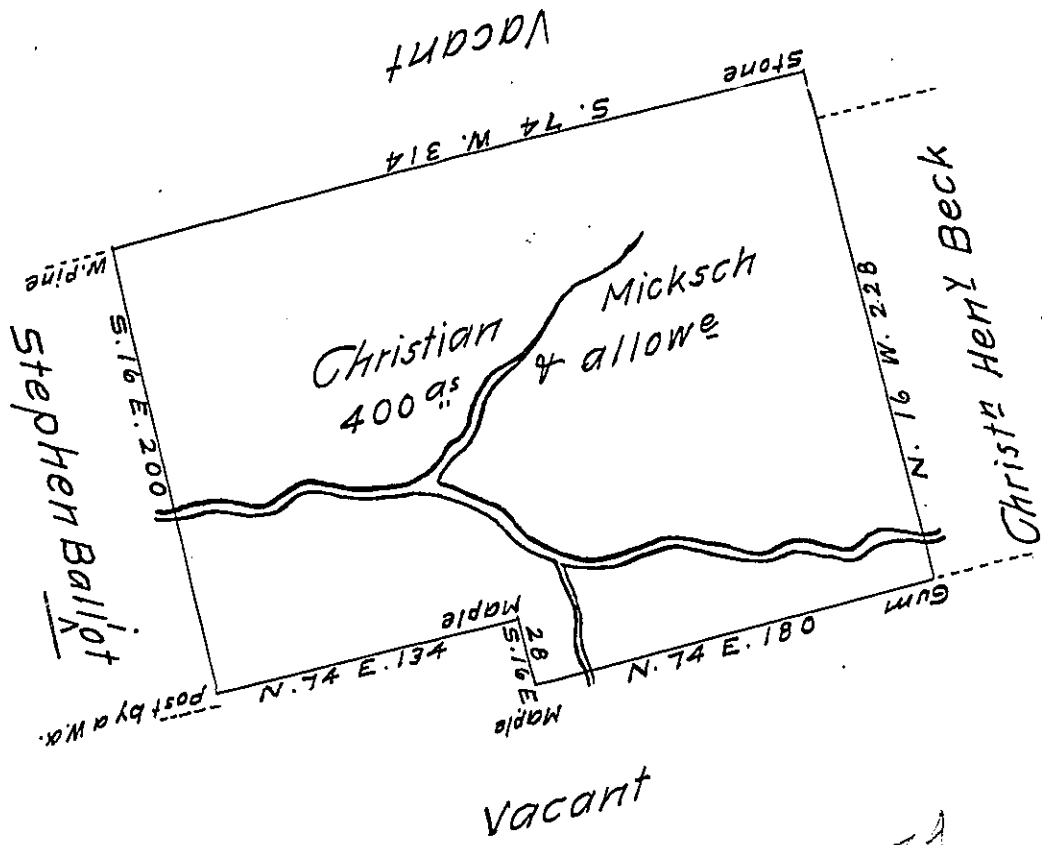


Hazle
Luzerne



A-407
A. 21-225

131
180
311

A draught of a tract of land called _____ situate on Black Creek joining land surveyed for Stephen Ballot & Christa Henly Beck in the County of Northumd (called in the warrant Northamp^{re}) containing four hundred acres & allowance of six p. cent for roads &c.

Surveyed for Christian Micksch the 22^d day of May 1792 in pursuance of a warrant dated the 3^d day of April 1792.

by W^m Gray D.S.

To Daniel Brodhead Esq^t }
Surv^t Gen^l

IN TESTIMONY that the above is a copy of the original remaining on file in the Department of Internal Affairs of Pennsylvania, made conformably to an Act of Assembly approved the 16th day of February, 1833, I have hereunto set my Hand and caused the Seal of said Department to be affixed at Harrisburg, this twenty-seventh day of March 1912

Henry Howell
Secretary of Internal Affairs.